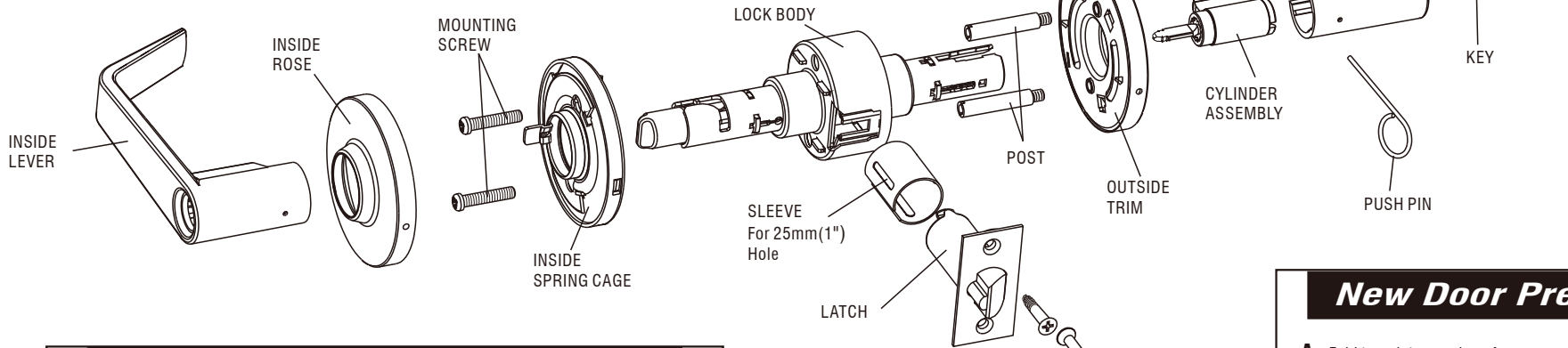


CAUTION: This lock is specially designed for extra thick door with thickness of 50~60mm. It can not be installed on common doors as it may lead to the damage of this lock.

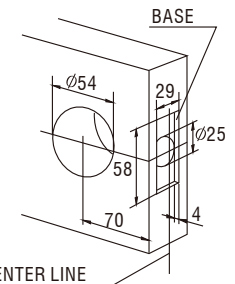
LEGGE G2 Series installation instructions

● Fit Doors 50mm(2") to 60mm(2-3/8") Thick ● Backset 70mm(2-3/4")

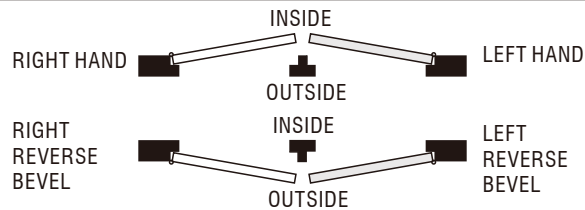


New Door Preparation

- A:** Fold template on edge of door mark site 70mm(2-3/4") of holes.
- B:** Drill a $\varnothing 54\text{mm}$ (2-1/8") hole through door (from both sides to avoid damaging door).
- C:** Drill a $\varnothing 25\text{mm}$ (1") hole in door edge.
- D:** Cut out a 58x29x4mm (2-9/32"x1-1/8"x5/32") base.

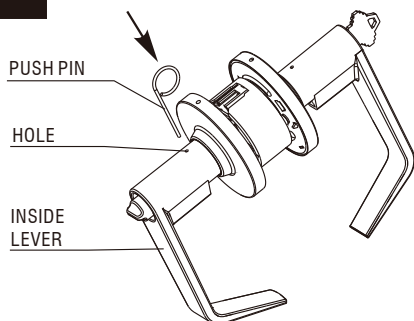


DOOR HANDING

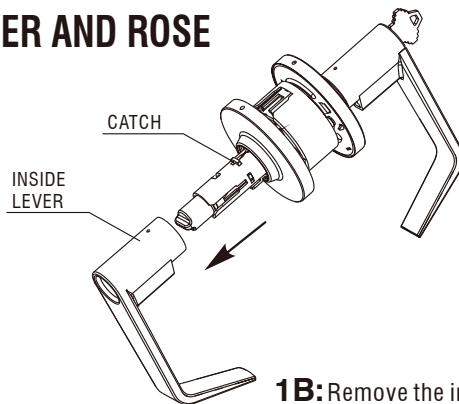


IN THE BOX DOOR HANDS DETERMINED FROM OUTSIDE

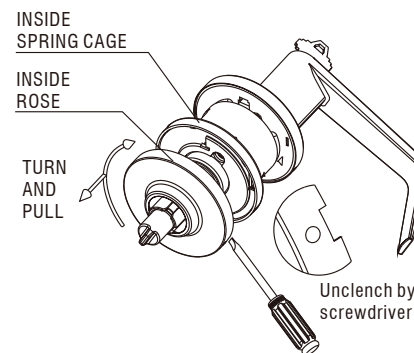
1 DISASSEMBLE INSIDE LEVER AND ROSE



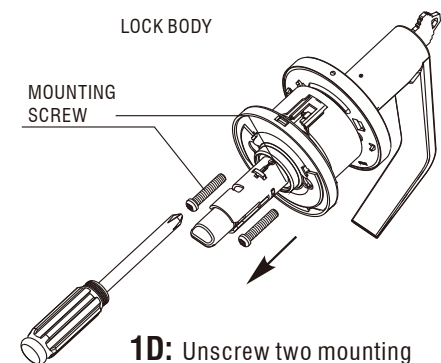
1A: Insert push pin into hole in inside lever to depress catch.



1B: Remove the inside lever from spindle.



1C: Remove inside rose by turning and pulling off.

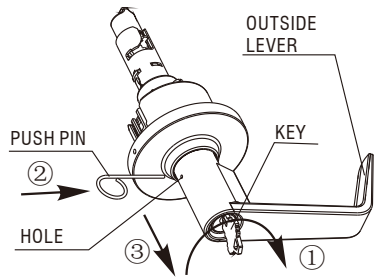


1D: Unscrew two mounting screws in lock body by screwdriver.

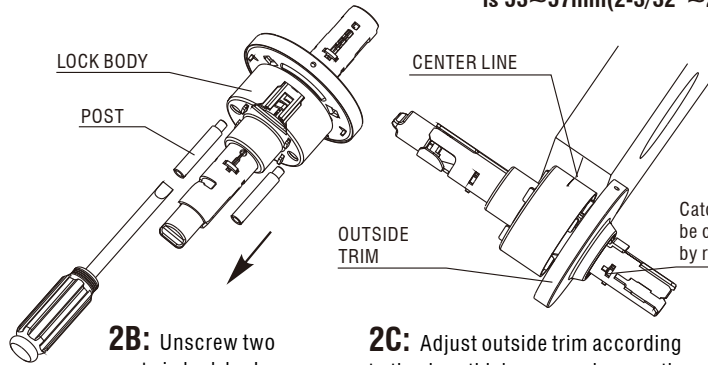
2

ADJUST OUTSIDE TRIM TO SUIT DOOR THICKNESS

[This lock is factory preset for 55mm(2-1/8")doors, if your door thickness is 53~57mm(2-3/32"~2-1/4") , skip Step 2 and go to Step 3 directly.]

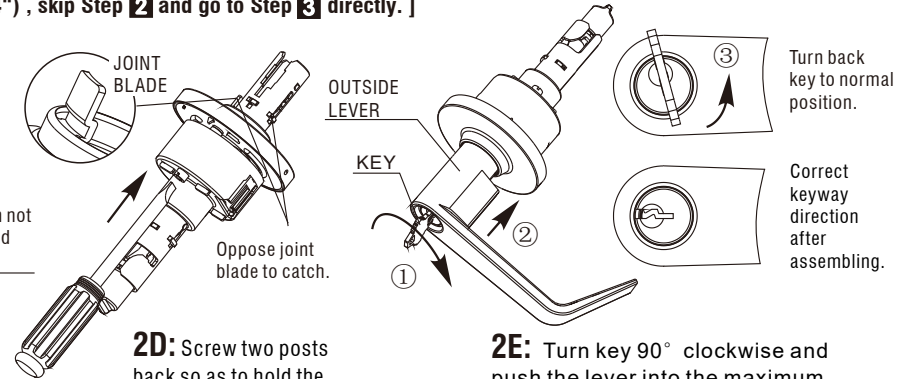


2A: Turn key 75° clockwise, insert push pin into hole in outside lever to depress catch. Remove the outside lever.



2B: Unscrew two posts in lock body by screwdriver.

2C: Adjust outside trim according to the door thickness, make sure the lock body at both sides is symmetrical.



2D: Screw two posts back so as to hold the outside rose tightly.

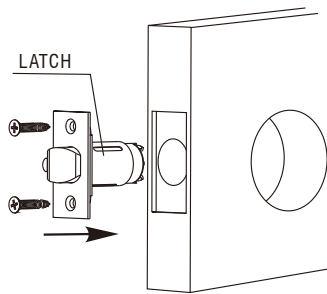
2E: Turn key 90° clockwise and push the lever into the maximum extent; rewind key.

Turn back key to normal position.

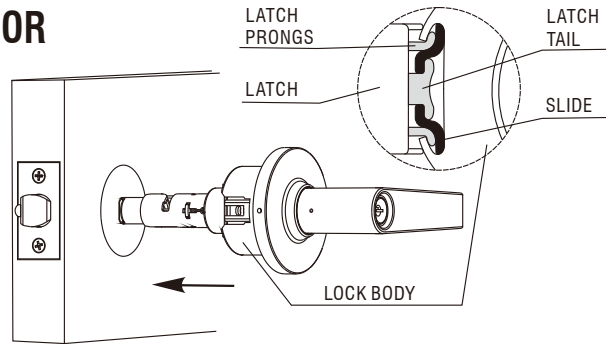
Correct keyway direction after assembling.

3

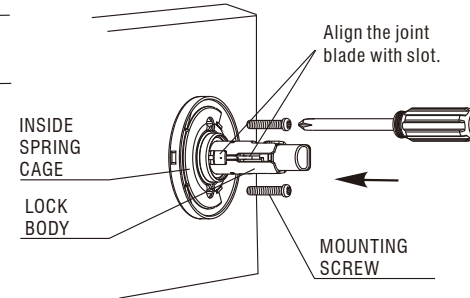
INSTALL LEVERSET TO DOOR



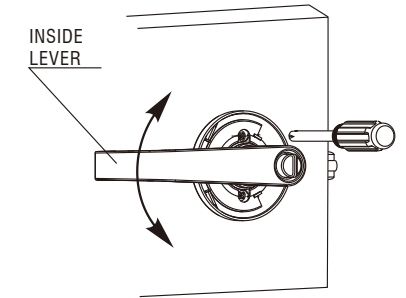
3A: Insert latch unit and fix it with two wood screws.



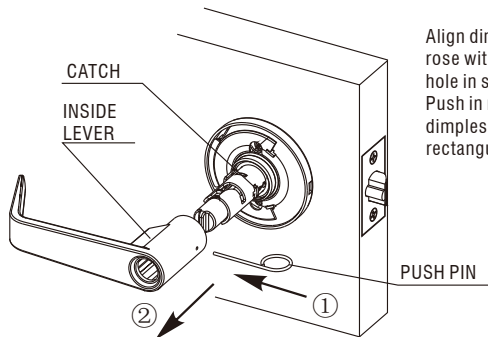
3B: Place lock body into position. Make sure that latch prongs engage chassis in housing, and slide engages latch tail.



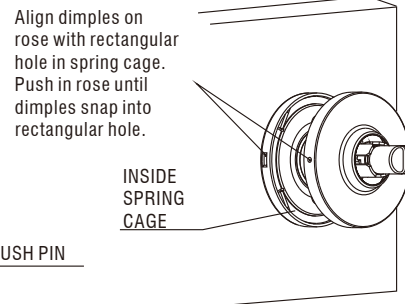
3C: Install inside spring cage, Screws should be tightened to its full length.



3D: Fix the inside lever and check if the rotation is smooth. Adjust the radial clearance between inside spring cage and inside lever.



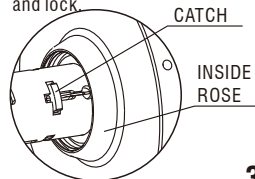
3E: Disassemble inside lever by push pin.



3F: Fix inside rose and make sure inside rose and inside spring cage are tightened.

IMPORTANT

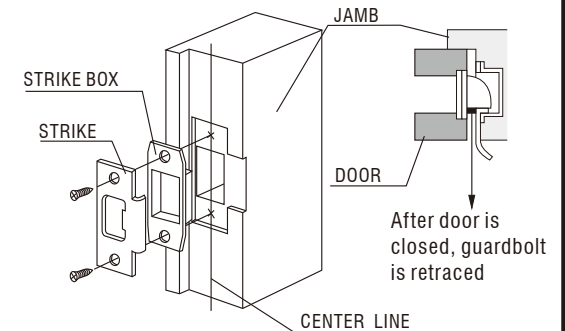
If the door is thicker than 60mm, the catch will be covered by inside rose, do not install inside lever and lock.



3G: Slide lever onto spindle. Push lever completely into place. (Pull on lever to make sure that catch is fully engaged).

4

INSTALL STRIKE



After door is closed, guardbolt is retracted